

EDUCATION

The Brookings Institution has categorized the Greater Baltimore region as one of only 19 global Knowledge Capitals, driven in large part by the region's educational assets. With more than 30 colleges and universities, Greater Baltimore is home to world-class higher education opportunities. The Region is also discovering ways to converge technology and education through companies like Allouve and nationally recognized high schools like Digital Harbor.

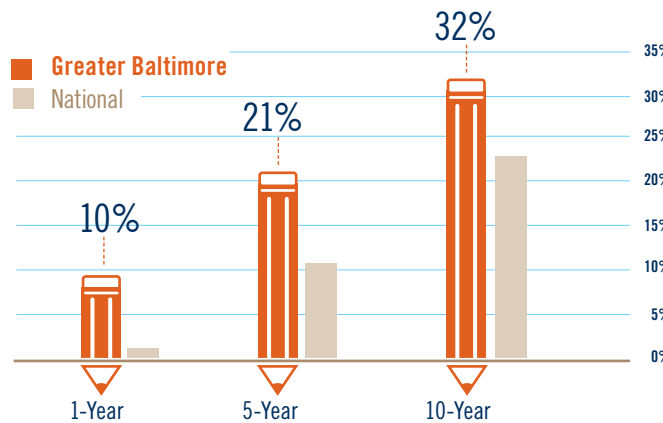


GREATER BALTIMORE INDUSTRY PROFILE

OVERVIEW

The education sector in Greater Baltimore has grown by 32% over the last 10 years, 10% of which is from the past year. It has significantly outpaced the national education sector, and over the last year Greater Baltimore education employment grew the second fastest of any large metro area. The concentration of educational services employment in the region is higher than all but two metros, Los Angeles and Boston. The sector employs 5 people for every 100 in the Region—a ratio that is more than double the national average. The industry offers highly competitive salaries throughout the Region, which is developing and attracting the nation's top talent.

EDUCATIONAL SERVICES EMPLOYMENT GROWTH



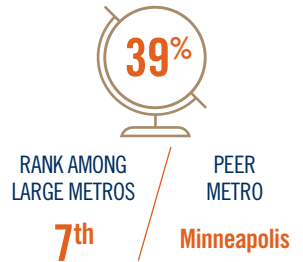
CONCENTRATION OF EDUCATION EMPLOYEES

(1.00 = National Average)

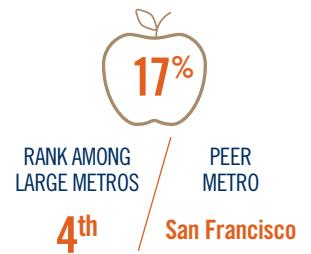
Rank	MSA	CONCENTRATION (May 2018)
1	Los Angeles	4.22
2	Boston	2.58
3	Greater Baltimore	1.92
4	St. Louis	1.15
5	Minneapolis	0.91

EDUCATIONAL ATTAINMENT IN GREATER BALTIMORE

Percent of Residents with Bachelor's Degree or Higher



Percent of Residents with Advanced Degree



GRADE SCHOOL

Primary education services have been growing at a well-above average rate. Preschool programs have grown dramatically over the last 10 years as efforts have increased to begin the learning process early. The number of teachers in classrooms has increased at some of the fastest rates of any metro, and the Region's special education field has increased similarly to help meet the needs of all students.

Special Education Occupations in Greater Baltimore

1-year Employment Growth Rank among metros



Preschool Occupations



RANK		10-YEAR PERCENT CHANGE	10-YEAR CHANGE
4	Denver	83%	2,100
5	Seattle	80%	2,320
6	Greater Baltimore	54%	1,840
7	Portland	36%	1,280
8	Los Angeles	34%	4,250

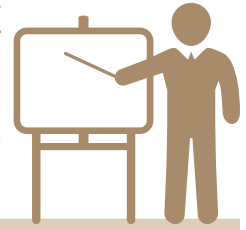
Greater Baltimore Preschool Occupation Concentration is 1.34
— RANKS 6TH AMONG METROS

POSTSECONDARY EDUCATION

There are 170,000 students currently enrolled in the 27 postsecondary institutions in Greater Baltimore. This number continues to grow, and with it so does the Region's postsecondary labor force. Across all postsecondary sectors, Greater Baltimore outpaces the average education employment growth. Most notably, Greater Baltimore's community college sector is booming, filling important middle skill positions in the region. Most notably, Greater Baltimore's community college sector is booming, filling important middle skill positions in the region in sectors like cybersecurity and health tech.

POSTSECONDARY 1-YEAR EMPLOYMENT CHANGE

	Community Colleges	Colleges, Universities and Professional Schools	Business Schools and Computer and Management
Greater Baltimore	16%	10%	8%
National Average	-2%	2%	1%



THERE ARE
170,000
STUDENTS
currently enrolled in the
27 POSTSECONDARY
INSTITUTIONS
in Greater Baltimore.

COLLEGE AND UNIVERSITY RANKINGS



**US NEWS
AND WORLD REPORT
RANKINGS 2018**

NATIONAL UNIVERSITIES

RANK	SCHOOL
11th	Johns Hopkins University
159th	University of Maryland, Baltimore County

NATIONAL LIBERAL ARTS COLLEGES

21st	United States Naval Academy
53rd	St. John's College
112th	Goucher College
134th	McDaniel College

REGIONAL UNIVERSITIES

4th	Loyola University of Maryland
41st	Towson University
56th	Notre Dame of Maryland University
86th	Stevenson University

HISTORICALLY BLACK COLLEGES

16th	Morgan State University
50th	Coppin State University

MOST INNOVATIVE SCHOOLS

7th	University of Maryland, Baltimore County
-----	--

PUBLIC SCHOOLS

10th	Towson University
------	-------------------

MOST CONCENTRATED POSTSECONDARY TEACHING OCCUPATIONS (1.00 = National Average)

Computer Science

CONCENTRATION RANK	CONCENTRATION
4 Tampa	1.24
5 Greater Baltimore	1.24
6 Miami	1.19

3rd fastest growing metro

Nursing and Healthcare

CONCENTRATION RANK	CONCENTRATION
2 Denver	1.60
3 Greater Baltimore	1.30
4 Portland	1.15

Fine Arts

CONCENTRATION RANK	CONCENTRATION
4 Philadelphia	1.26
5 Greater Baltimore	1.19
6 San Diego	1.10